

**Instruction Manual for the**  
**Start-Stop™ PEDAL POWER**  
**FOR DRAGON MEDICAL**  
**with**  
**Super Heavy Duty Version (12" Base)**

**VERSION 4.0.0 -With Pedal Release Actions and  
Infinite Repeat Functions**



**HTH Engineering, Inc. 825 Cypress Trails Dr., Tarpon Springs,  
FL 34688 TEL: (727) 939-8853 FAX: (810) 821-6940**  
<http://www.startstop.com>

**Perform foot-pedal activation of any keystroke, keystroke  
sequence, or mouse click action using any PC (laptop portable  
or desktop) running Windows 8, Windows 7, Windows Vista,  
Windows XP, Windows ME, Windows 2000 or Windows 2003/2008  
server equipped with a USB port. Use your feet to activate up  
to 3 separate pedals and their corresponding keystroke  
functions**

Copyright 2001-2014 All Rights Reserved. HTH Engineering, Inc.

## CONGRATULATIONS!

Thank you for purchasing the Start Stop PEDAL POWER (SSPP) System.

### FEATURES INCLUDE:

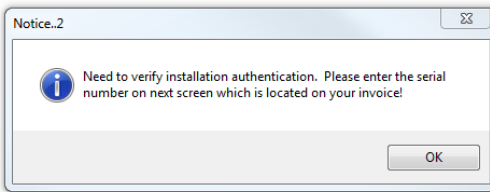
- Perform foot-pedal activation of any keystroke, keystroke sequence, or mouse click action using any PC (laptop portable or desktop) running Windows and equipped with a USB port.
- Perfect for controlling your favorite software applications while keeping your hands on the instrument you are playing.
- Versatile software lets you program any keystroke, keystroke sequence, or mouse click action when the corresponding pedal is pressed *and/or released (Version 2.2)*
- Uses a single standard USB port on your PC
- New Version 4.0 supports infinite repeat for pedal down actions and USB Pedal
- No batteries required- self-powered by your computer's serial port
- Made in the USA

## WHAT YOU'LL NEED TO USE Pedal Power

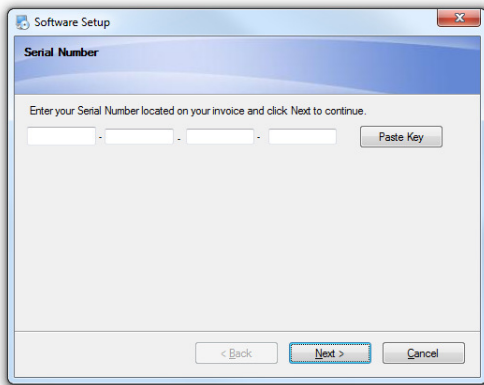
-**A PC** (laptop, portable or desktop) running Windows 8, Windows 7, Windows Vista, Windows XP, Windows ME, Windows 2000 or Windows 2003/2008 server, with an available USB port:

## INSTALLATION INSTRUCTIONS

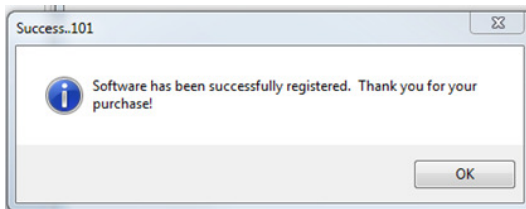
- 1) Make sure your PC has a working USB Port.
- 2) Launch the software installation .EXE
- 3) After installing, launch the program for the first time:



- 4) **Click OK and enter the Registration Code (Serial Number) provided with your software. You can type it in manually, or highlight the number (if you received your number via email) and click the "Copy" command (CTRL + C) and then just click the PASTE KEY button on the Software Setup screen.**



- 5) Click "Next" ... and your software will register and you'll see this message:

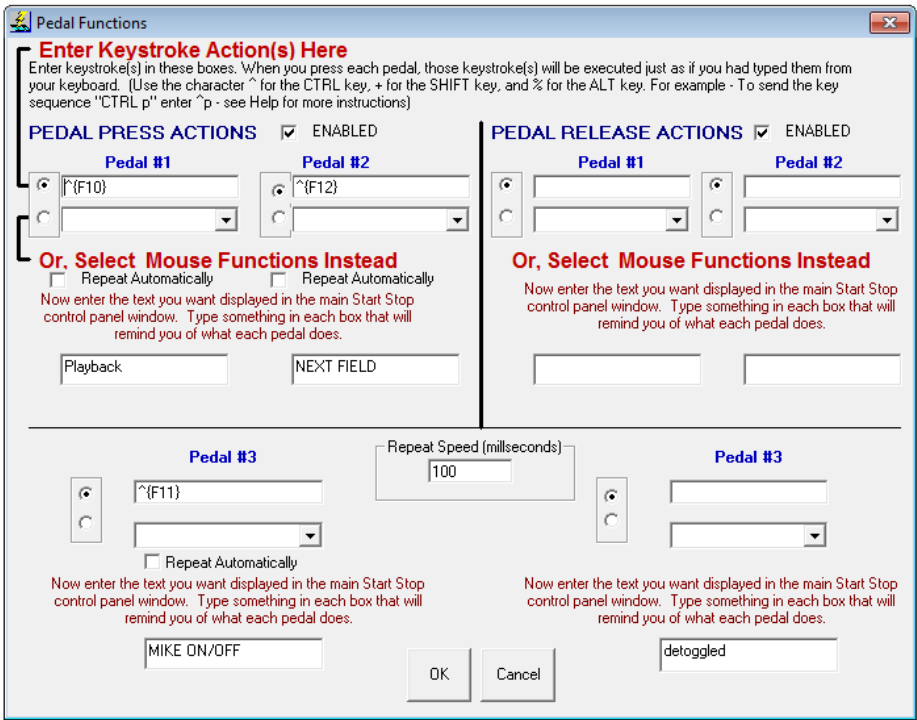


- 6) Connect the pedal to your computer's USB Port.
- 7) Re-start Windows. Once Windows is running, the SSPP Control Panel will be active:



*Control Panel for the SSPP*

- 8) Press the pedals and look for the photo of the pedal to animate (move) in sync with your foot.
- 9) Select Configure from the menu, then Pedal Functions. The following menu will appear:

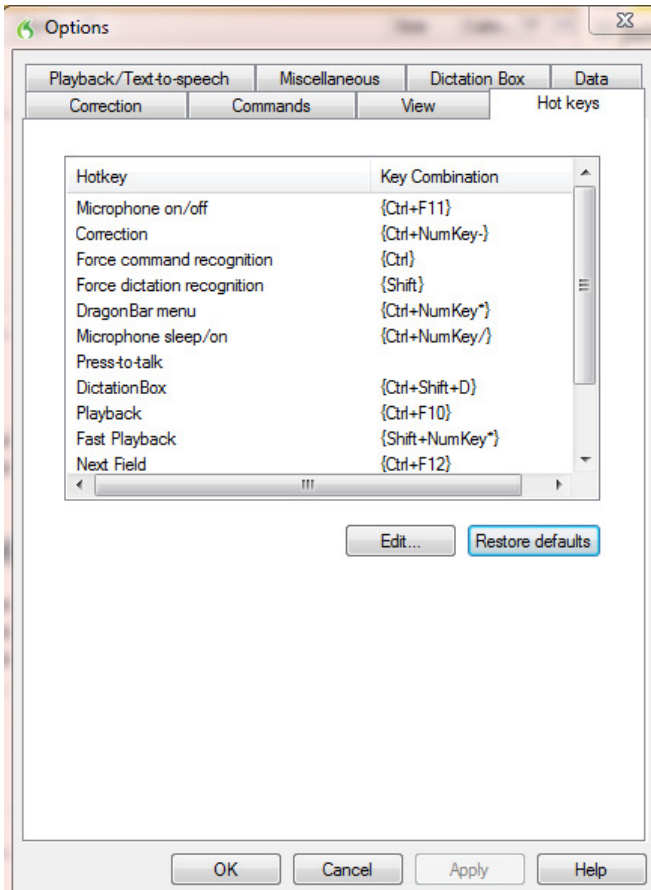


Typical Configuration Shown Above for Dragon Medical:

- Left Pedal = CTRL + F10 (Playback)
- Middle Pedal = CTRL + F11 (Microphone Toggle On/Off)
- Right Pedal = CTRL + F12 (Next Field)

For this example, just type in the keystrokes as shown in the above screenshot (^{F10}, ^{F11}, ^{F12}) and enter mnemonic reminder text as MIKE ON/OFF, PLAYBACK, and NEXT FIELD.

Now configure the same keystrokes in Dragon Medical (by going to Tools...Options...Hotkeys):



You're done!

The Pedal Function menu allows you to assign a pedal to any keystroke or mouse action. .

You can also enter any keystroke sequence in the top "keystroke action" boxes. For instance, pressing Pedal #1 could cause your computer to print "Hello how are you?" every time you press Pedal #1.

Actions upon pedal release or pedal press can be separately enabled or disabled, by checking the appropriate box (note that the caption next to the check box will change from ENABLED to DISABLED when checked/unchecked. Keystroke(s) or mouse actions are sent to the active ("focused") window.

You can perform a quick test by opening the Windows Notepad (Start...Run...type "Notepad" and click OK): Open up Notepad, with the Start Stop software running, and make sure that Notepad has the focus (is in the foreground). If you had assigned Pedal #1 (when pressed) to type "John Doe, 1234 Main Street, Anytown, USA 12345", then that text will appear in the Notepad window whenever you press the pedal.

Pedal-activated mouse click emulations can also be quickly and easily selected by clicking on the MOUSE FUNCTIONS "radio buttons" and then selecting your desired mouse action from the pull-down menu list.

#### **SPECIAL KEYSTROKES AND COMBINATION KEYSTROKES**

Detailed instructions for combination keystroke(s) and multiple keystrokes follows in Appendix "A".

13) Installation is now complete.

## APPENDIX “A” Programming Combination or Multiple Keystrokes

### Pedal Function Programming Guidelines

---

To program your own pedal functions use the following programming guidelines.

The foot pedals can be used to emulate keyboard characters being pressed in an application, including shortcut key sequences, etc.

To emulate keyboard character sequences follow the programming instructions below.

Each pedal function represent one or more characters. To specify a single keyboard character, use the character itself. For example, to represent the letter A, use "A". (Note: Omit the quotation marks.) If you want to represent more than one character, append each additional character to the one preceding it. To represent the letters A, B, and C, use "ABC". Note: Case is important for shortcut keys - most shortcut keys use lower case characters.

The plus sign (+), caret (^), percent sign (%), tilde (~), and parentheses ( ) have special meanings. To specify one of these characters, enclose it within braces. For example, to specify the plus sign, use {+}. Brackets ([ ]) have no special meaning, but you must enclose them in braces as well, because in other applications, brackets do have a special meaning that may be significant when dynamic data exchange (DDE) occurs. To send brace characters, use {{ } and { } }.

To specify keys combined with any combination of the SHIFT, CTRL, and ALT keys, precede the regular key code with one or more of the following codes:

Key	Code
SHIFT	+
CTRL (CONTROL)	^
ALT	%

To specify that any combination of SHIFT, CTRL, and ALT should be held down while several other keys are pressed, enclose the code for those keys in



parentheses. For example, to specify to hold down SHIFT while E and C are pressed, use "+(EC)". To specify to hold down SHIFT while E is pressed, followed by C without SHIFT, use "+EC". Remember that most shortcut keys are lower case.

To specify characters that aren't displayed when you press a key (such as ENTER or TAB) and keys that represent actions rather than characters, use the codes shown below:

Key	Code
BACKSPACE	{BACKSPACE}, {BS}, or {BKSP}
BREAK	{BREAK}
CAPS LOCK	{CAPSLOCK}
DEL	{DELETE} or {DEL}
DOWN ARROW	{DOWN}
END	{END}
ENTER	{ENTER} or ~
ESC	{ESC}
HELP	{HELP}
HOME	{HOME}
INS	{INSERT}
LEFT ARROW	{LEFT}
NUM LOCK	{NUMLOCK}
PAGE DOWN	{PGDN}
PAGE UP	{PGUP}
PRINT SCREEN	{PRTSC}
RIGHT ARROW	{RIGHT}
SCROLL LOCK	{SCROLLLOCK}
TAB	{TAB}
UP ARROW	{UP}
F1	{F1}
F2	{F2}
F3	{F3}
F4	{F4}
F5	{F5}
F6	{F6}
F7	{F7}
F8	{F8}
F9	{F9}

F10	{F10}
F11	{F11}
F12	{F12}
F13	{F13}
F14	{F14}
F15	{F15}
F16	{F16}

To specify repeating keys, use the form {key number}. You must put a space between key and number. For example, {LEFT 42} means press the LEFT ARROW key 42 times; {h 10} means press h 10 times.

Note: The SSPP is designed to work with Windows applications only - it will not work with non-windows (DOS) applications. This version is for use with Windows XP, ME, 2000, Vista, 7, 8, or 8.1 only.

**TECH SUPPORT:** Send e-mail to: [webmaster@startstop.com](mailto:webmaster@startstop.com).

Please include the following information:

-Detailed description of your problem or question, Your Name, Company Name, Address, Telephone Number, Date Purchased, details on the type of computer you are using, Operating System (Windows 8, Windows 7, Windows Vista, Windows XP, Windows ME, Windows 2000 or Windows 2003/2008 server), and the type of product purchased from HTH Engineering, Inc.

**TELEPHONE and FAX-BASED TECH SUPPORT:** Call (727) 939-8853 (Tarpon Springs, FL, USA). Tech Support Hours: 9AM-5PM Eastern Time Zone, Monday through Friday. FAX: (810) 821-6940 any time, 24 hrs/day, 7 days/week.

### **LIMITED WARRANTY**

This unit is guaranteed against defects in material or manufacture for a period of 1 year from the date of original purchase. Return the unit postpaid, with proof of purchase, to:

HTH Engineering, Inc., 825 Cypress Trails Dr., Tarpon Springs, FL 34688

The unit will be repaired or replaced, at seller's discretion. No other warranties are expressed or implied. Seller accepts no liability for fitness for use in intended application. Liability is limited strictly to the purchase price of the unit.

### **NOTES**

- Specifications subject to change without notice.