

Quick Setup Guide for Start-Stop® PowerPlay Video/DVD Transcription Software

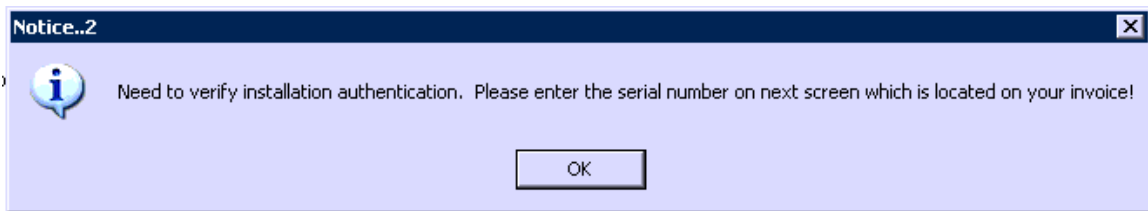
(for more detailed setup information, you may refer to the Instruction Manual in Adobe PDF format, located in the Documentation folder of your CD-ROM)

INSTALLATION INSTRUCTIONS

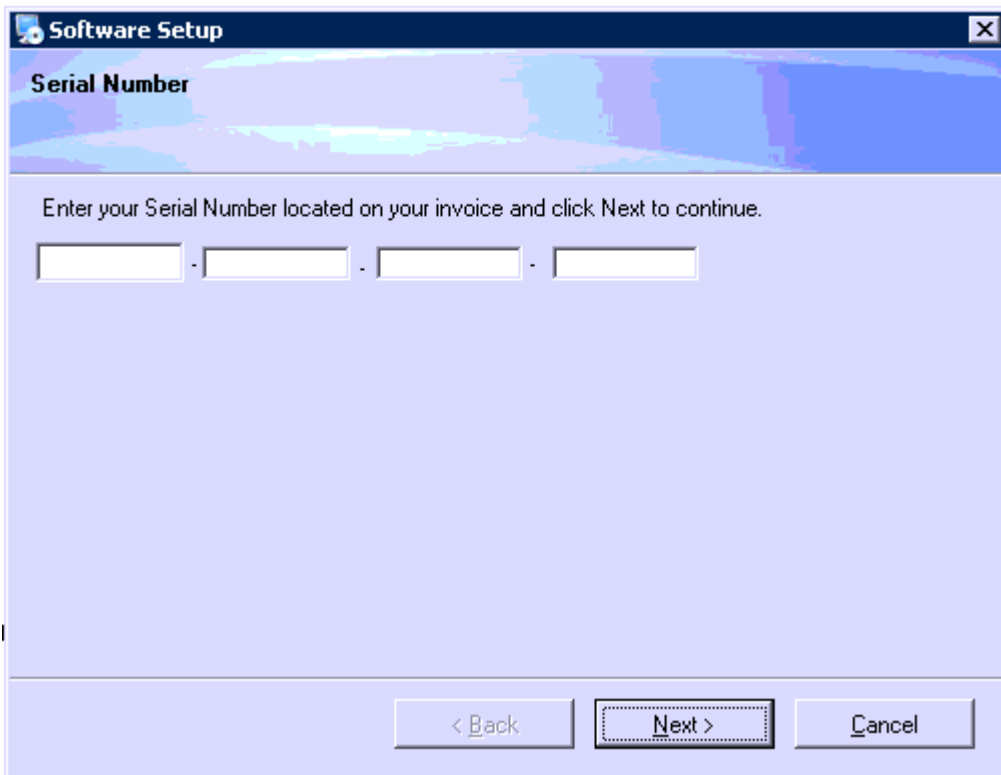
- 1) **Close all open applications on your PC, and temporarily disable all Anti-Virus and Anti-Spyware software. Then Insert the Start-Stop Installation CD-ROM into your computer.** You do not need to disable Firewalls. **The Start-Stop Installation Software should begin automatically after several seconds. Click the “INSTALL” button.**

Please follow the on-screen instructions, and answer “OK” or “Yes” to questions asked. When the FINISH button appears, **be sure to restart your PC.**

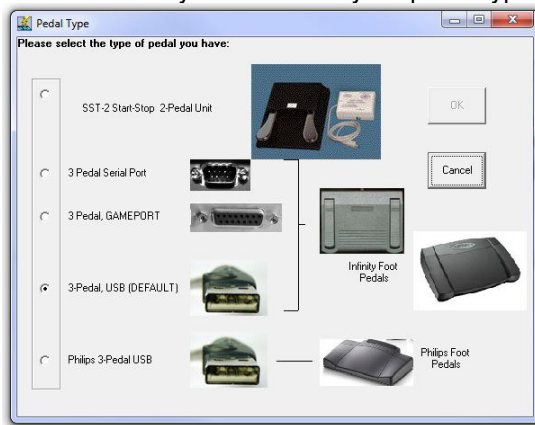
- 2) Launch the Start-Stop Powerplay Transcription software by clicking on the icon on your desktop:
The first time you run the program, you will be asked to enter your license key:



Please enter the code provided in the blanks shown and click NEXT. Your software is now registered.



Now it will ask you to choose your pedal type:

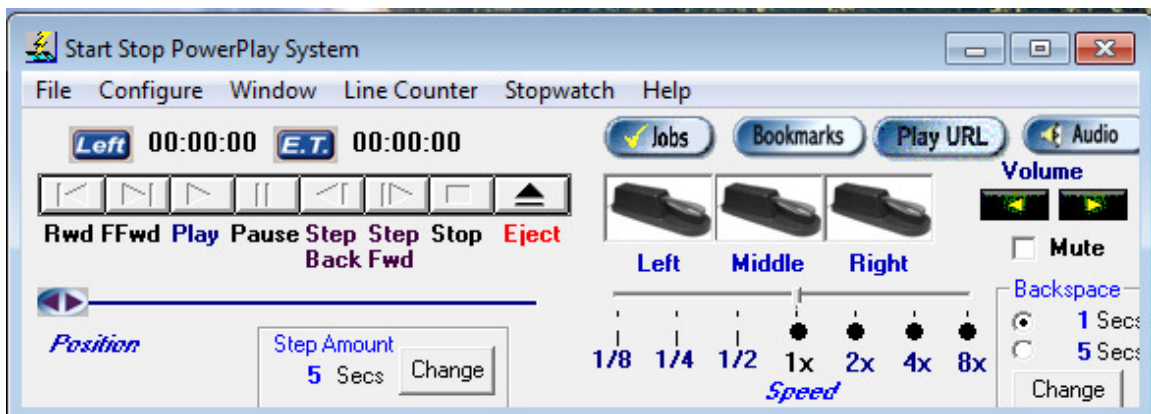


Choose the type of pedal you have ("3-Pedal, USB DEFAULT" is the model that's included with the Start-Stop Powerplay Video/DVD Transcription System Model #31700), then click **OK** and follow the on-screen directions.

If you have a Philips™ brand USB Pedal or Philips 2305 Hand-Control: select "Philips 3-Pedal USB" from above screen. Then, install the Philips software CD-ROM that came with the pedal.

(If you make a mistake, or want to re-start this screen, click on "Configure"... "Select Pedal Type" from the Start-Stop's main screen).

- 3) **Plug your Foot Pedal/Control into your PC**
You should hear a "doorbell chime" sound indicating that the PC recognizes that a device has been plugged in.
- 4) Click on the **Start-Stop PowerPlay Video/DVD Transcription System Icon** on your desktop. You will see this screen:



Installation is now complete!